

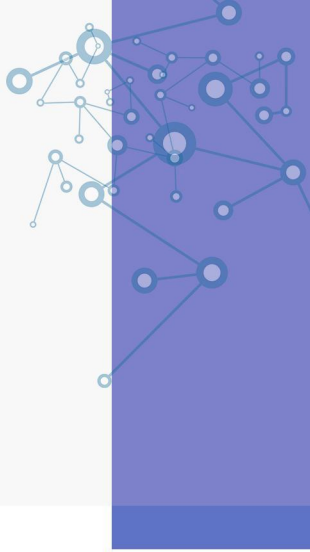
810nm/980nm Dental Diode Laser System

Low-Trauma, High Precision and Fast Recovery



The Diode Laser of 810nm/980nm wavelength is widely used in dentistry. The photoelectric conversion rate is high. The cumulative effect of the laser quickly reaches the required energy in a short period of time, which has good penetrating and stimulating effects on the body, improves blood circulation and reduces tissue edema. It plays the role of anti-inflammatory and analgesic, and also be more suitable for precise surgery, with less damage to normal tissues, more thorough treatment, lower recurrence rate, and safer surgery.

Equipped with the full range of tips, the diode laser could be the most versatile devices for many applications, including oral surgery, pain relief, and whitening, etc.



ACCESSORIES



Teeth Bleaching Tip



Therapy Tip



Curing Tip



Disposable Tip

APPLICATIONS

- Oral Surgery
- Periodontal Therapy
- Endodontics
- Laser Therapy
- Teeth Whitening

SPECIFICATIONS

Laser Type	810nm/980nm Diode
Power	3W/8W/10W
Operation Mode	CW or Pulse
Power requirements	AC100–240V; 50/60HZ
Wireless Foot Pedal	Frequency:2.4G
Safety Classes	Class 4 laser Electrical safety class Type B

