



# A NEW SMARTPHONE DIGITAL ADAPTOR FOR ANTERIOR SEGMENT PHOTOGRAPHY

## PURPOSE

To describe a novel Smartphone Digital Micro Imaging Adaptor (Quikvue Plus® - Visuscience) for anterior segment photography.

The adaptor was used to picture canine and feline patients at AnimaVet and VetRiviera referral centers. Anterior segment imaging was conducted with the adaptor mounted on a Samsung S20® ultra and an Iphone® 13 mini. Coaxial illumination during viewing was provided by a double light-emitting diode (LED) built into the device with two intensity levels of white and one cobalt blue. Two magnification lenses are integretated in the adaptor enabling a 10x Zoom. The device is adaptable to all phones thanks to a universal mounting system. The smartphone was used in picture and video mode using the highest quality camera settings.

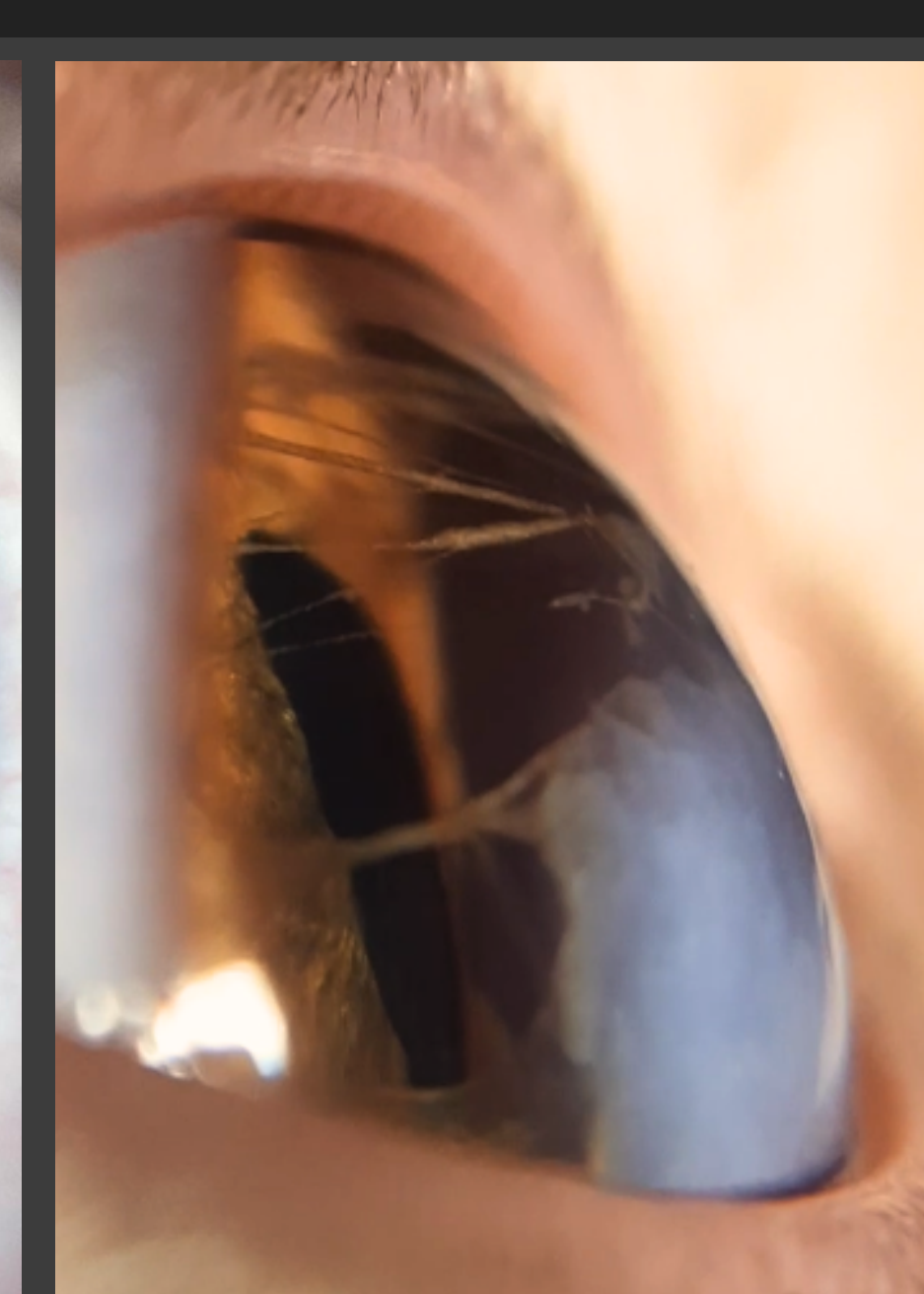
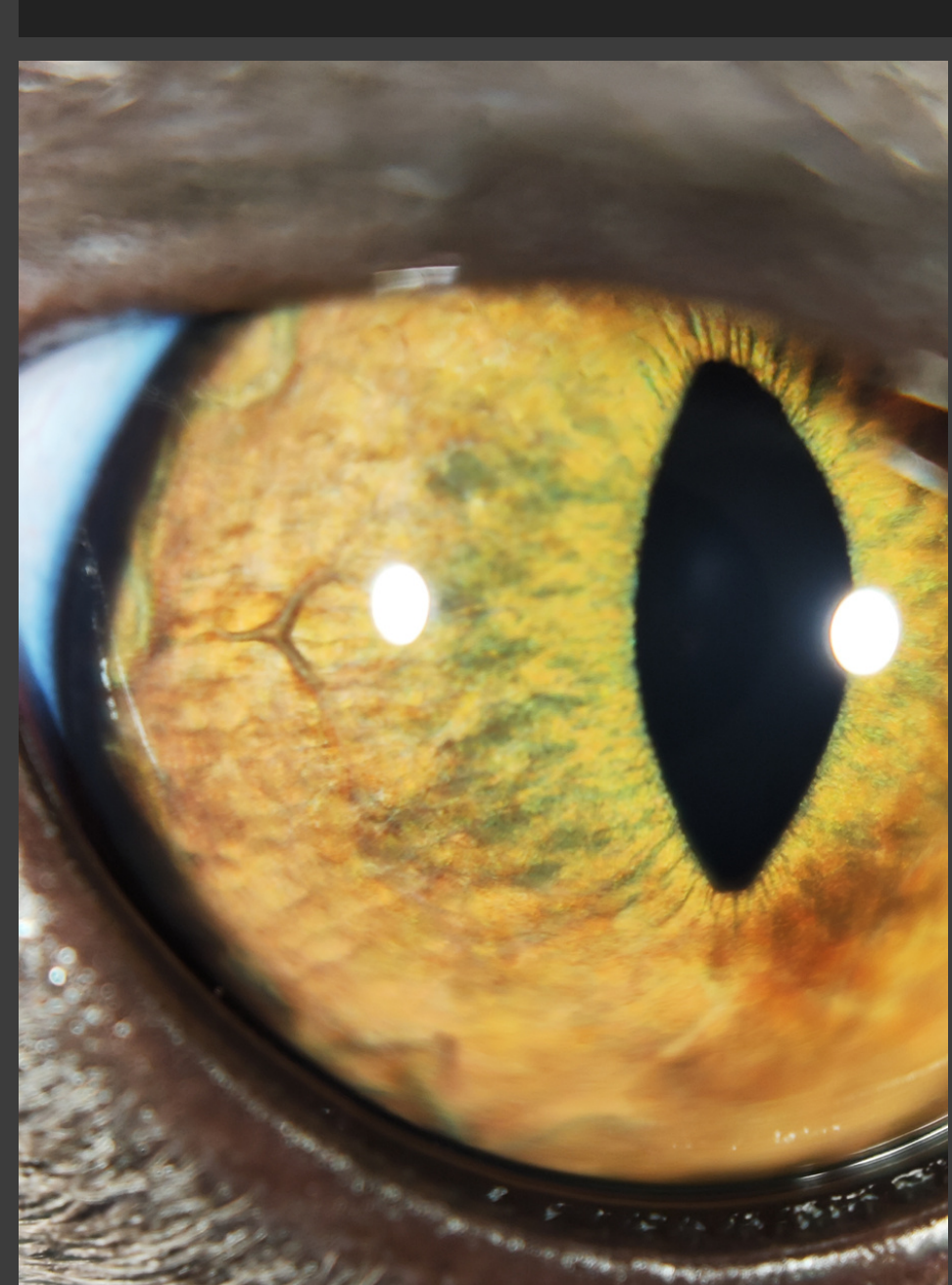
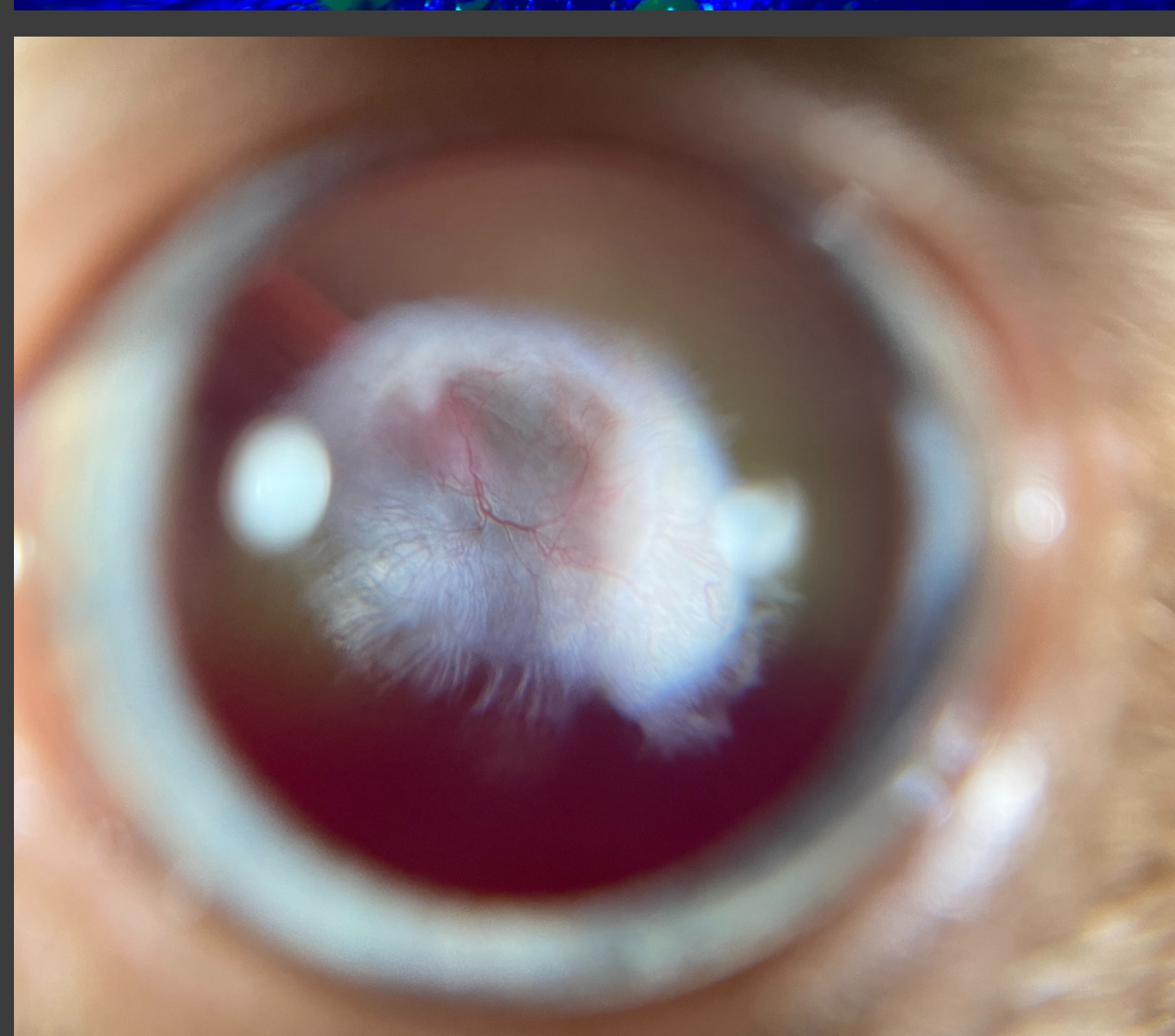
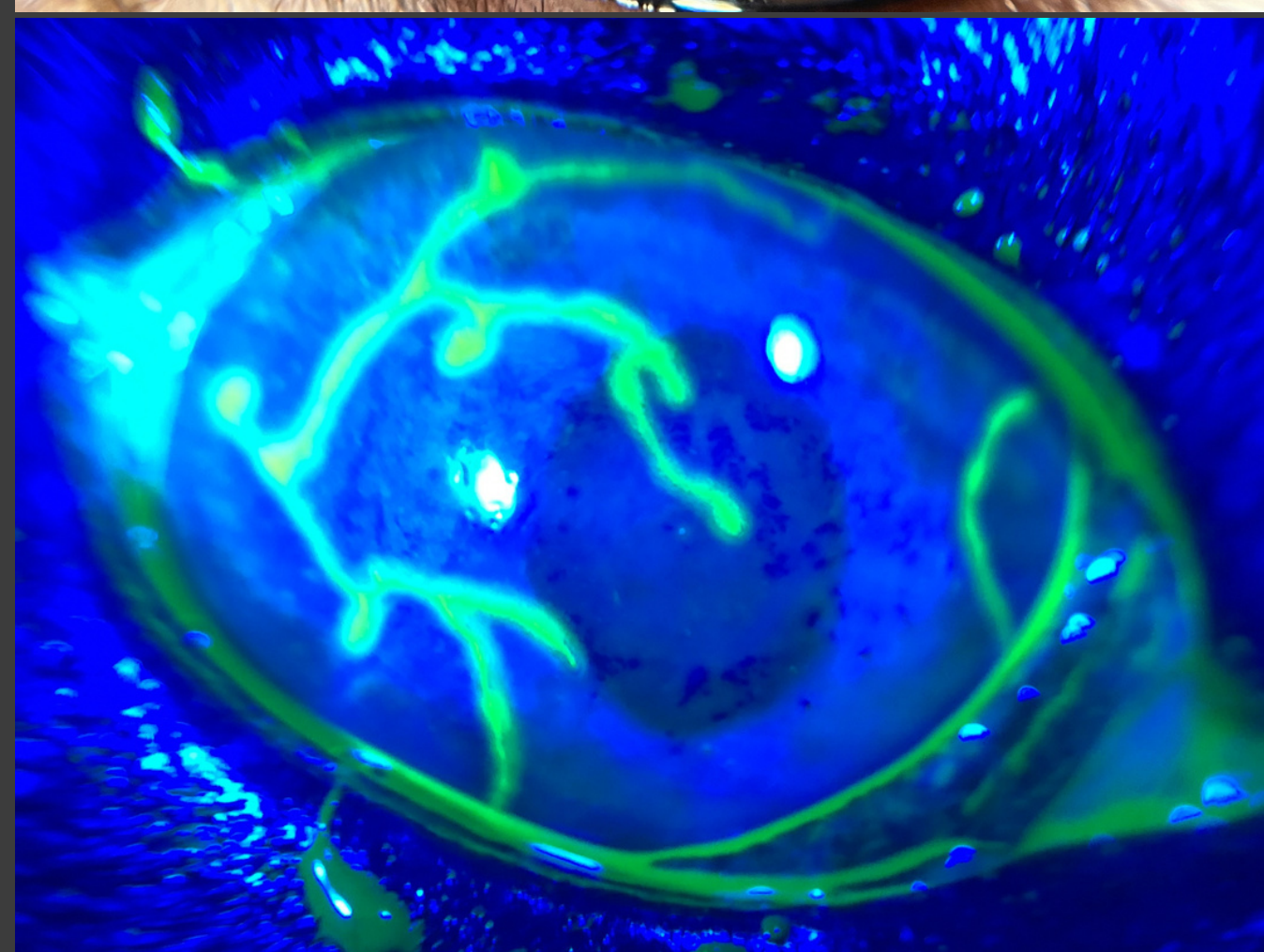
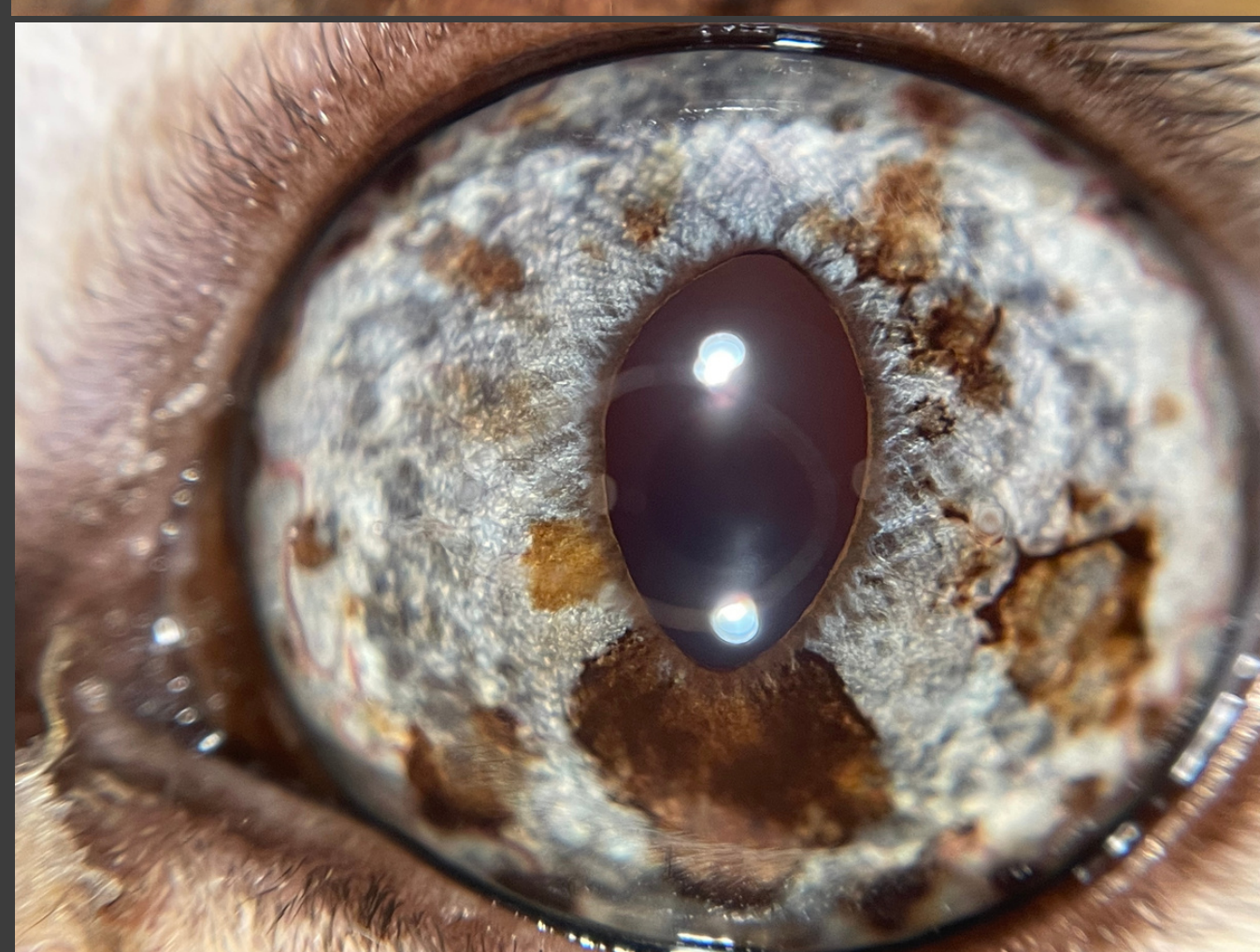
## RESULTS

This Smartphone Digital Micro Imaging Adaptor provides high-resolution quality, low-reflection images of the anterior segments. It was easy to carry, assemble and handle. The necessary adjustments, positioning and focusing required for quality images were easily performed. Obtaining the best shots was facilitated by deactivating the autofocus of the smartphone camera or using the video mode.

The described smartphone adapter provides an affordable and easy to use alternative to existing imaging systems. It can also be used by owners and general practitioners in order to improve patients follow-up.

## PROCEDURE

## CONCLUSION



**Bertrand Michaud** Clinique Vétérinaire AnimaVet, Saint Genis Pouilly



**Charles Cassagnes** Clinique Vétérinaire VetRiviera, Nice

